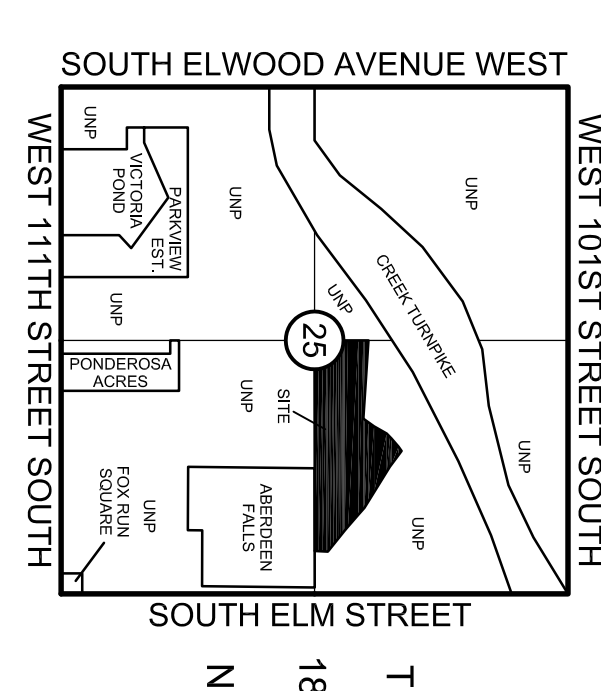


R 12 E  
WEST 101ST STREET SOUTH



Location Map  
SCALE: 1"=200'

PLAT No.

# The Estates at Stone Bluff

A SUBDIVISION OF PART OF THE NE¼ OF SECTION 25, TOWNSHIP 18 NORTH,  
RANGE 12 EAST, CITY OF JENKS, TULSA COUNTY, OKLAHOMA

P.U.D. NO. 33

Owner/Developer:  
**Oak Properties, L.L.C.**  
6670 South Lewis Avenue, Suite 201  
Tulsa, Oklahoma 74136  
Phone: (918) 289-9007

Engineer/Surveyor:  
**Bennett Surveying, Inc**  
PO Box 848  
Chouteau, Oklahoma 74337  
Phone: (918) 476-7484

SUBDIVISION CONTAINS SYSTEM (48)  
LOTS IN THREE (3) BLOCKS AND FOUR (4) RESERVE AREAS.

SUBDIVISION CONTAINS 28.618 TOTAL ACRES  
BLOCK ONE (1) CONTAINS 8.709 ACRES  
BLOCK TWO (2) CONTAINS 9.702 ACRES  
BLOCK THREE (3) CONTAINS 7.773 ACRES  
RESERVE 'A' CONTAINS 0.025 ACRES  
RESERVE 'B' CONTAINS 0.025 ACRES  
RESERVE 'C' CONTAINS 1.120 ACRES  
RESERVE 'D' CONTAINS 0.009 ACRES

**Monumentation:**  
ALL LOT CORNERS SHOWN ON THIS PLAT WERE EITHER SET USING AN IRON PIN WITH A CAP STAMPED R. WESLEY BENNETT L.S. 1562 OR FOUND IRON PINS WITH CAPS PLACED BY OTHERS.

**Basis of Bearing:**  
BASIS OF BEARING IS ASSUMED USING THE SOUTH LINE OF THE NE¼ OF SECTION 25 AS S 89°43'08" W.

STATE OF OKLAHOMA ) SS  
COUNTY OF TULSA )

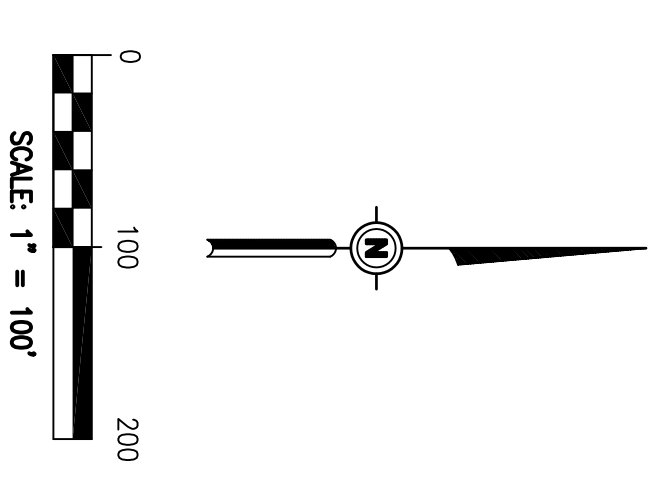
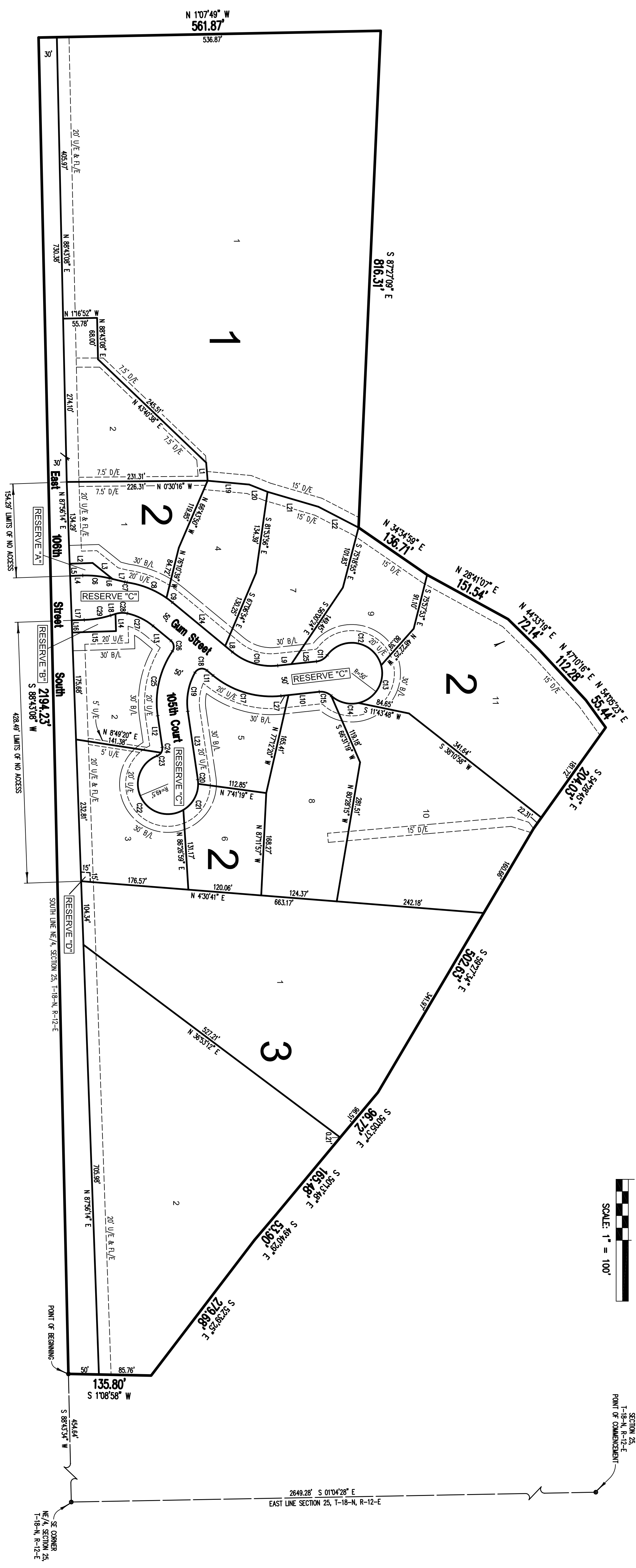
I, Estelene Wilson, Tulsa County Clerk, in and for the County and State above named, do hereby certify that the foregoing is a true and correct copy of a like instrument now on file in my office.

Dated this 20 day of Estelene Wilson, Tulsa County Clerk  
Deputy

FINAL PLAT  
CERTIFICATE OF APPROVAL  
I hereby certify that this plat was approved by the Jenks City Council on \_\_\_\_\_  
MAYOR - VICE MAYOR \_\_\_\_\_  
This approval is void if the above signature is not endorsed by the City Manager.  
CITY MANAGER \_\_\_\_\_

BENCH MARK #2 Hub & Tack in Stump on Site.  
Stump Located on South Side of Block 2 Lot 3.  
Elevation 672.81

BENCH MARK #1 Located at the top nut on the Fire Hydrant at the North East Corner of 106th & Elm.  
Elevation 613.50



NE CORNER  
SECTION 25  
T-18-N, R-12-E  
POINT OF COMMENCEMENT

**CURVE TABLE**

NO.	DELTA	LENGTH	RADIUS	CHORD	CHORD
			BEARING	BEARING	LENGTH
08	152°21'9"	43.53'	162.00'	N65°53'48"E	43.50'
07	02°38'17"	3.74'	36.00'	N10°50'49"E	3.74'
06	28°50'07"	70.25'	150.00'	N67°28'44"E	68.61'
03	04°41'52"	12.30'	150.00'	N67°12'45"E	12.30'
010	48°43'05"	77.69'	100.00'	N48°42'06"E	77.69'
011	47°40'35"	20.86'	25.00'	N63°59'44"W	20.21'
012	128°42'33"	112.32'	50.00'	N103°15'1"E	90.15'
013	92°27'25"	80.60'	50.00'	S89°58'46"E	72.15'
014	59°18'34"	48.27'	50.00'	S45°13'17"W	48.41'
015	48°41'56"	21.25'	25.00'	S81°11'27"W	20.62'
016	48°10'46"	40.87'	50.00'	S55°12'2"E	33.27'
017	45°43'05"	119.67'	150.00'	S19°02'9"W	118.54'
018	102°55'07"	22.27'	10.00'	S10°35'2"E	19.92'
019	08°02'18"	6.94'	48.90'	S89°49'1"E	6.43'
020	08°02'18"	6.94'	48.90'	S89°49'1"E	6.43'
021	59°33'11"	51.45'	48.90'	S60°17'25"E	48.17'
022	189°56'05"	184.09'	48.90'	S84°15'14"W	88.63'
023	36°29'53"	8.28'	11.00'	N87°03'40"W	8.14'
024	41°01'46"	9.31'	11.00'	N77°49'27"W	9.11'
025	42°28'35"	111.13'	150.00'	N77°49'48"W	108.61'
026	84°33'00"	19.18'	11.00'	S81°30'09"W	17.48'
027	27°07'03"	47.33'	100.00'	S60°10'08"W	48.89'
028	29°51'16"	19.80'	30.00'	S62°29'02"E	19.58'
029	152°21'9"	43.53'	162.00'	S69°30'31"E	43.50'

**LINE TABLE**

NO.	BEARING	LENGTH
L1	N85°18'30"E	29.86'
L2	N1°52'21"W	37.63'
L3	N28°54'34"E	42.12'
L4	N1°52'21"W	20.78'
L5	N87°56'14"E	20.00'
L6	N133°39'37"E	5.86'
L7	N133°39'37"E	20.33'
L8	N82°13'30"E	15.44'
L9	N103°51'4"W	13.38'
L10	S88°09'25"E	30.81'
L11	S88°13'59"W	13.88'
L12	S81°39'44"W	32.29'
L13	S88°13'59"W	30.06'
L14	S88°07'39"W	28.19'
L15	N01°52'21"W	72.02'
L16	N87°56'14"E	20.00'
L17	N01°52'21"W	20.54'
L18	N17°24'40"W	8.46'
L19	N65°13'33"E	68.46'
L20	N61°44'43"E	32.34'
L21	N81°18'30"E	87.20'
L22	N27°24'45"E	74.29'
L23	N82°13'30"E	113.31'
L24	N82°13'30"E	103.31'
L25	S89°09'25"E	41.37'
L26	S77°03'29"W	43.32'
L27	S89°09'25"E	12.32'